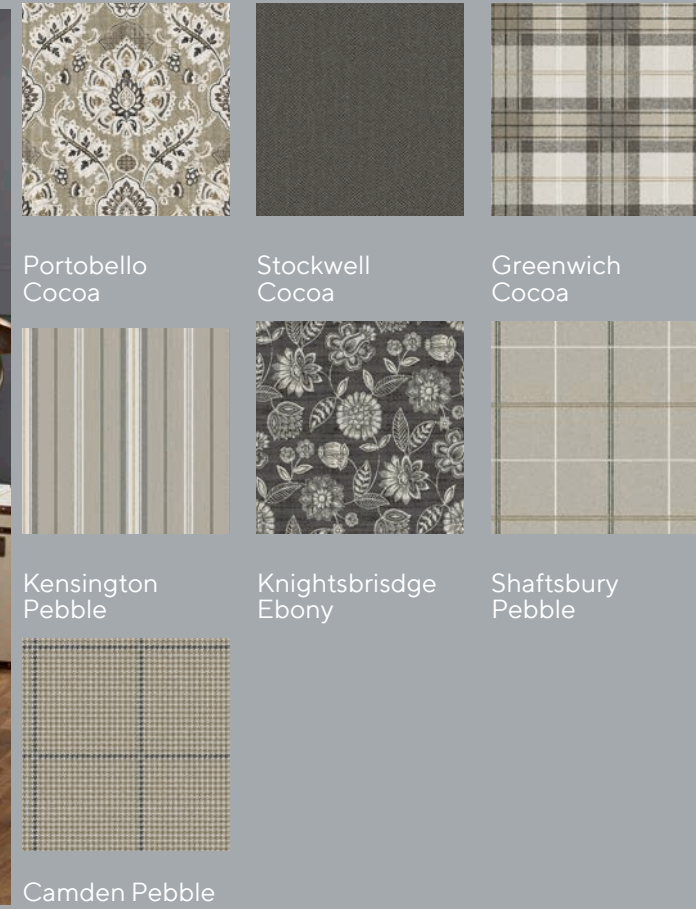


Claret



Cocoa



Indigo



Heather



3.1 | Print | Chelsea

3.1 | Print | Chelsea

Product code	Product information	Suggested end use	Flame retardant specification	Care instructions
6910	Inherently Flame Retardant Panama 100% Polyester 150cm / 59 inches 240gsm / 7.1 oz sqy +/- 5%	Curtaining	B1, BS 5867 Part 2 B & C, IMO FTP Code 2010 Part 7	Washable at 71°C for thermal disinfection
6999	Inherently Flame Retardant Mezzo Brushed Panama 100% Polyester 150cm / 59 inches 220gsm / 6.5 oz sqy +/- 5%	Curtaining	B1, BS 5867 Part 2 B & C, IMO FTP Code 2010 Part 7	Washable at 71°C for thermal disinfection
6913	Inherently Flame Retardant Satin Weave 100% Polyester 142cm / 56 inches 230gsm / 6.8 oz sqy +/- 5%	Curtaining, Bedding, Cushions	M1, B1, BS 5867 Part 2 B & C, EN 13773, BS 7175 Source 0, 5, 8, 7, IMO FTP Code 2010 Part 7, 8, 9	Washable at 71°C for thermal disinfection
6994	Inherently Flame Retardant Nimbus 100% Trevira CS Polyester 140cm / 55 inches 230gsm / 6.8 oz sqy +/- 5%	Curtaining, Bedding, Cushions	B1, BS 5867 Part 2 B & C, IMO FTP Code 2010 Part 7, BS 5815 Part 3	Washable at 71°C for thermal disinfection
6934	Inherently Flame Retardant Quatro 100% Polyester 142cm / 56 inches 230gsm / 6.8 oz sqy +/- 5%	Curtaining, Bedding, Cushions	M1, B1, BS 5867 Part 2 B & C, IMO FTP Code 2010 Part 7, 8, 9	Washable at 71°C for thermal disinfection
6900	Inherently Flame Retardant Plain Weave 100% Polyester 141cm / 56 inches 145gsm / 4.3 oz sqy +/- 5%	Curtaining, Bedding	M1, BS 5867 Part 2 B & C, BS 5815 Part 3, BS 7175 Source 0, 5, 8, 7, IMO FTP Code 2010 part 7	Washable at 71°C for thermal disinfection
6975 & 6974	Inherently Flame Retardant Enigma Dimout 100% Polyester 146-148cm / 57-58 inches (6975) or 292cm / 115 inches (6974) 298gsm / 8.8 oz sqy +/- 5%	Curtaining (Dimout)	M1, B1, EN 13773, BS 5867 Part 2 B & C, IMO FTP Code 2010 part 7, NFPA 701 1+2, Classe Uno	Washable at 71°C for thermal disinfection
6904	Inherently Flame Retardant Venus Dimout 100% Polyester 150cm / 59 inches 250gsm / 7.4 oz sqy +/- 5%	Curtaining (Dimout)	M1, B1, BS 5867 Part 2 B & C, BS 7175 Source 2, NFPA 701 1+2, CA19, IMO FTP Code 2010 Part 7, Classe Uno	Washable at 71°C for thermal disinfection
6755 & 6750	Flame Retardant Discovery Blackout 100% Polyester / Acrylic back coating 145cm / 57 inches (6755) or 290cm / 114 inches (6750) 410gsm / 12.1 oz sqy +/- 5%	Curtaining (Blackout)	B1, BS 5867 Part 2 B, EN 13773, IMO Module 8, IMO FTP Code 2010 Part 7, NFPA 701 1+2, CA19, Classe Uno	Iron on non-coated side
6911 & 6952	Inherently Flame Retardant Blackout 100% Polyester / Acrylic back coating 142cm / 56 inches (6911) or 280cm / 110 inches (6952) 240gsm / 7.1 oz sqy +/- 10%	Curtaining (Blackout)	BS 5867 Part 2 B, IMO FTP Code 2010 Part 7, NFPA 701 1+2, Classe Uno	Iron on non-coated side
6957 & 6958	Flame Retardant Outback Silk Blackout 100% Polyester / Acrylic back coating 142cm / 56 inches (6957) or 284cm / 112 inches (6958) 285gsm / 8.4 oz sqy +/- 5%	Curtaining (Blackout)	B1, BS 5867 Part 2 Type B, IMO FTP Code 2010 Part 7, EN 13773, NFPA 701 1+2, Classe Uno	Iron on non-coated side
6896	Inherently Flame Retardant Blackout 100% Polyester / Acrylic back coating 140cm / 55 inches 300gsm / 8.8 oz sqy +/- 5%	Curtaining (Blackout)	M1, B1, BS 5867 Part 2 B, IMO FTP Code 2010 Part 7	Iron on non-coated side
6996 & 6998	Inherently Flame Retardant Libra Blackout 100% Polyester / Acrylic back coating 145cm / 57 inches (6996) or 280cm / 110 inches (6998) 300gsm / 8.8 oz sqy +/- 5%	Curtaining (Blackout)	BS 5867 Part 2 Type B, IMO FTP Code 2010 Part 7	Iron on non-coated side
9017	Inherently Flame Retardant Illusion Sheer 100% Polyester 300cm / 118 inches 70gsm / 2.1 oz sqy	Curtaining (Voile)	M1, EN 13773, BS 5867 Part 2 C, IMO FTP Code 2010 Part 7, Classe Uno	Washable at 71°C for thermal disinfection
9049 & 9000	Flame Retardant Sheer 100% Polyester 150cm / 59 inches (9049) or 300cm / 118 inches (9000) 50gsm / 1.5 oz sqy +/- 3%	Curtaining (voile)	M1, BS 5867 Part 2 Type C, IMO FTP Code 2010 Part 7	Washable at 71°C for thermal disinfection
6978	Flame Retardant Sentinel MRSA 100% Polyester / Acrylic back coating 137cm / 54 inches 350gsm / 10.3 oz sqy +/- 5%	Waterproof Upholstery >100,000 Martindale	BS 5852 Crib 5, IMO FTP Code 2010 Part 8	Routine soap and warm water sponging is effective for ordinary soiling. Fresh stains, both water and oil based are easily removed using most water based household cleaning agents. Antiseptic cleaning agents can be used and more stubborn stains may be required a safe solvent such as isopropyl Alcohol or mineral spirit. A half cup of household bleach for 5 litres of water can also be used as a useful disinfectant. Best cleaning is wipe & dry technique. Full immersion is not recommended. Not dry cleanable. Excellent stain removal has been observed for: Blood, Urine, Grease, Ink, Coffee, Grape Juice, Lardine, Butterine, Ketchup, Mustard, Salad dressing and suntan lotion.
6914	Flame Retardant Endurance MRSA 100% Polyester impregnated and multi-coated microporous polymers 140cm / 55 inches 350gsm / 10.3 oz sqy +/- 5%	Waterproof Upholstery >50,000 Martindale	BS 5852 Crib 5, IMO FTP Code 2010 Part 8	Do not dry clean Will not support microbial growth including: Aspergillus Niger, E Coli, AtRisk, Salmonella, Penicillium, MRSA, Clostridium Herbarium. AATCC test 147 - 1998

Soapless detergent to be used on all of the above base cloths. No fabric conditioners/softeners or freshener sprays to be used as this can adversely affect FR properties. A tolerance of +/- 3% should be allowed for on pattern repeats as it can vary from quality to quality. Shade variations may occur batch to batch but we will endeavour to maintain good colour continuity. Please inspect all goods before cutting as no claims can be accepted or exchanges made once the material has been cut.

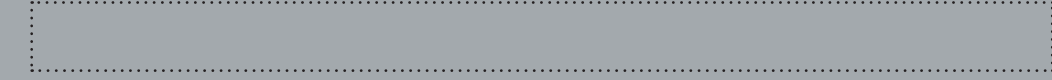
Samples and information

Get in touch with our team today for a fabric sample or for further information.

Ordering a sample is simple.

Online: edmundbell.com
 Call: +44 (0) 1706 717070
 Email: sales@edmundbell.com

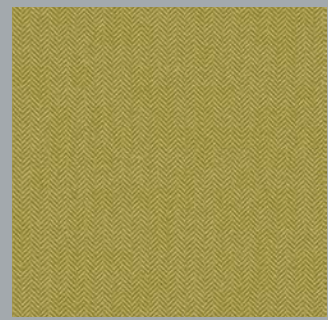
Although every effort is made, no guarantee for exact colour match is given.



Pewter



Portobello Pewter



Stockwell Mustard



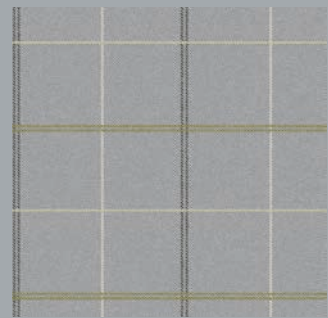
Greenwich Mustard



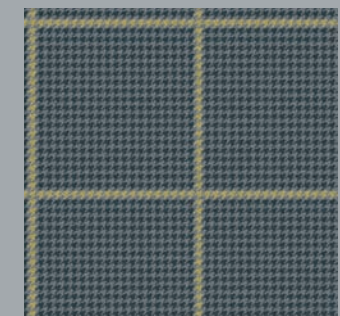
Kensington Pewter



Knightsbridge Pewter



Shaftsbury Pewter



Camden Pewter

Pattern repeats: Portobello H46.6cm x V46.6cm. Stockwell H17.5cm x V17.5cm. Greenwich H35cm x V35cm. Kensington H35cm x V35cm. Knightsbridge H17.5cm x V35cm half drop. Shaftsbury H35cm x V35cm. Camden H17.5cm x V17.5cm.

Copper



Portobello Copper



Stockwell Topaz



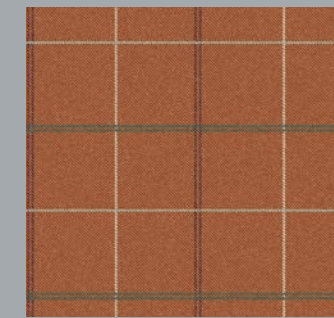
Greenwich Copper



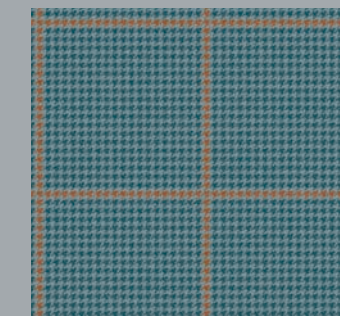
Kensington Topaz



Knightsbridge Topaz



Shaftsbury Copper

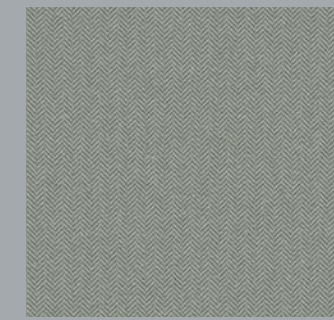


Camden Topaz

Stone



Portobello Stone



Stockwell Mist



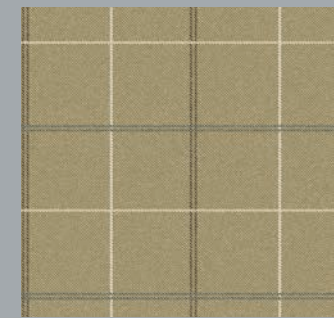
Greenwich Stone



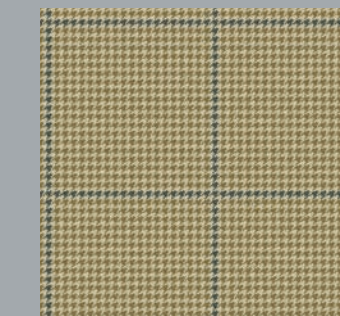
Kensington Mist



Knightsbridge Mist



Shaftsbury Stone



Camden Stone

Large sample from top to bottom: Portobello Pewter, Stockwell Mustard, Greenwich Mustard, Kensington Pewter, Knightsbridge Pewter, Shaftsbury Pewter, Camden Pewter.

Printed onto 6999 Mezzo Brushed Panama