

Magenta



Floris Magenta



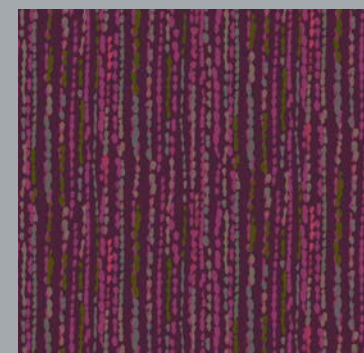
Oasis Magenta



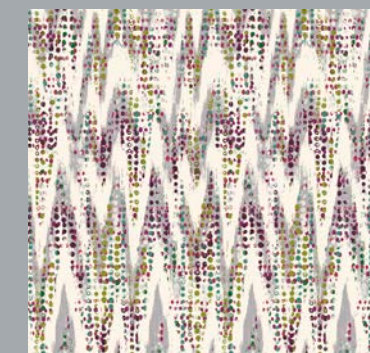
Marquise Pepper



Amilie Magenta



Monsoon Magenta

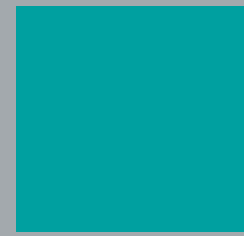


Finesse Magenta

Sapphire



Floris Sapphire



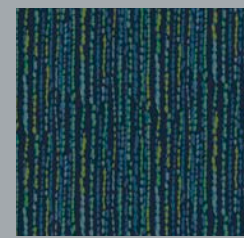
Oasis Sapphire



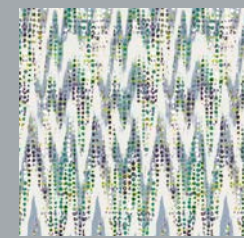
Marquise Citrine



Amilie Sapphire



Monsoon Sapphire

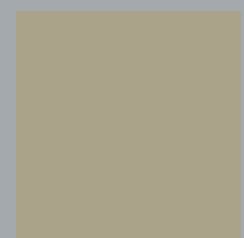


Finesse Sapphire

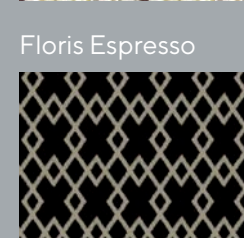
Espresso



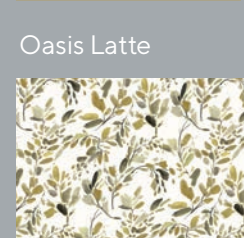
Floris Espresso



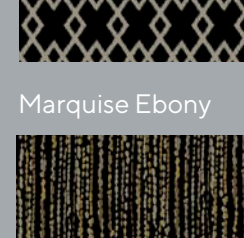
Oasis Latte



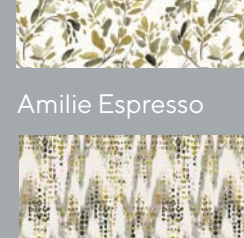
Marquise Ebony



Amilie Espresso



Monsoon Ebony



Finesse Espresso



3.1 | Print Bloom

3.1 | Print Bloom

| Product code | Product information   | Suggested end use                        | Flame retardant specification  | Care instructions  |
|--------------|---|--|--|--|
| 6910         | Inherently Flame Retardant Panama<br>100% Polyester<br>150cm / 59 inches<br>240gsm / 7.1 oz sqy +/- 5%  | Curtaining                               | B1, BS 5867 Part 2 B & C, IMO FTP Code 2010 Part 7   | Washable at 71°C for thermal disinfection  |
| 6999         | Inherently Flame Retardant Mezzo Brushed Panama<br>100% Polyester<br>150cm / 59 inches<br>220gsm / 6.5 oz sqy +/- 5%  | Curtaining                               | B1, BS 5867 Part 2 B & C, IMO FTP Code 2010 Part 7   | Washable at 71°C for thermal disinfection  |
| 6913         | Inherently Flame Retardant Satin Weave<br>100% Polyester<br>142cm / 56 inches<br>230gsm / 6.8 oz sqy +/- 5%   | Curtaining, Bedding, Cushions            | M1, B1, BS 5867 Part 2 B & C, EN 13773, BS 7175 Source 0, 5, 6, 7, IMO FTP Code 2010 Part 7 & 9            | Washable at 71°C for thermal disinfection  |
| 6994         | Inherently Flame Retardant Nimbus<br>100% Trevira CS Polyester<br>140cm / 55 inches<br>230gsm / 6.8 oz sqy +/- 5%   | Curtaining, Bedding, Cushions            | B1, BS 5867 Part 2 B & C, IMO FTP Code 2010 Part 7, BS 5815 Part 3   | Washable at 71°C for thermal disinfection  |
| 6934         | Inherently Flame Retardant Quatro<br>100% Polyester<br>142cm / 56 inches<br>230gsm / 6.8 oz sqy +/- 5%  | Curtaining, Bedding, Cushions            | M1, B1, BS 5867 Part 2 B & C, IMO FTP Code 2010 Part 7 & 9   | Washable at 71°C for thermal disinfection  |
| 6900         | Inherently Flame Retardant Plain Weave<br>100% Polyester<br>141cm / 56 inches<br>145gsm / 4.3 oz sqy +/- 5%   | Curtaining, Bedding                      | M1, BS 5867 Part 2 B & C, BS 5815 Part 3, BS 7175 Source 0, 5, 6, 7, IMO FTP Code 2010 part 7              | Washable at 71°C for thermal disinfection  |
| 6975 & 6974  | Inherently Flame Retardant Enigma Dimout<br>100% Polyester<br>146-148cm / 57-58 inches (6975) or 292cm / 115 inches (6974)<br>298gsm / 8.8 oz sqy +/- 5%                  | Curtaining (Dimout)                      | M1, B1, EN 13773, BS 5867 Part 2 B & C, IMO FTP Code 2010 part 7, NFPA 701 1+2, Classe Uno                 | Washable at 71°C for thermal disinfection  |
| 6904         | Inherently Flame Retardant Venus Dimout<br>100% Polyester<br>150cm / 59 inches<br>250gsm / 7.4 oz sqy +/- 5%  | Curtaining (Dimout)                      | M1, B1, BS 5867 Part 2 B & C, BS 7175 Source 2, NFPA 701 1 + 2, CA19, IMO FTP Code 2010 Part 7, Classe Uno | Washable at 71°C for thermal disinfection  |
| 6755 & 6750  | Flame Retardant Discovery Blackout<br>100% Polyester / Acrylic back coating<br>145cm / 57 inches (6755) or 290cm / 114 inches (6750)<br>410gsm / 12.1 oz sqy +/- 5%       | Curtaining (Blackout)                    | B1, BS 5867 Part 2 B, EN 13773, IMO Module 8, IMO FTP Code 2010 Part 7, NFPA 701 1+2, CA19, Classe Uno     | Iron on non-coated side  |
| 6911 & 6952  | Inherently Flame Retardant Blackout<br>100% Polyester / Acrylic back coating<br>142cm / 56 inches (6911) or 280cm / 110 inches (6952)<br>240gsm / 7.1 oz sqy +/- 10%      | Curtaining (Blackout)                    | BS 5867 Part 2 B, IMO FTP Code 2010 Part 7, NFPA 701 1 + 2, Classe Uno                                     | Iron on non-coated side  |
| 6957 & 6958  | Flame Retardant Outback Silk Blackout<br>100% Polyester / Acrylic back coating<br>142cm / 56 inches (6957) or 284cm / 112 inches (6958)<br>285gsm / 8.4 oz sqy +/- 5%     | Curtaining (Blackout)                    | B1, BS 5867 Part 2 Type B, IMO FTP Code 2010 Part 7, EN 13773, NFPA 701 1 + 2,                             | Iron on non-coated side  |
| 6896         | Inherently Flame Retardant Blackout<br>100% Polyester / Acrylic back coating<br>140cm / 55 inches<br>300gsm / 8.8 oz sqy +/- 5%   | Curtaining (Blackout)                    | M1, B1, BS 5867 Part 2 B, IMO FTP Code 2010 Part 7   | Iron on non-coated side  |
| 6996 & 6998  | Inherently Flame Retardant Libra Blackout<br>100% Polyester / Acrylic back coating<br>145cm / 57 inches (6996) or 280cm / 110 inches (6998)<br>300gsm / 8.8 oz sqy +/- 5% | Curtaining (Blackout)                    | BS 5867 Part 2 Type B, IMO FTP Code 2010 Part 7  | Iron on non-coated side  |
| 9017         | Inherently Flame Retardant Illusion Sheer<br>100% Polyester<br>300cm / 118 inches<br>70gsm / 2.1 oz sqy   | Curtaining (Voile)                       | M1, EN 13773, BS 5867 Part 2 C, IMO FTP Code 2010 Part 7, Classe Uno                                       |  |
| 9049 & 9000  | Flame Retardant Sheer<br>100% Polyester<br>150cm / 59 inches (9049) or 300cm / 118 inches (9000)<br>50gsm / 1.5 oz sqy +/- 3%   | Curtaining (voile)                       | M1, BS 5867 Part 2 Type C, IMO FTP Code 2010 Part 7  |  |
| 6978         | Flame Retardant Sentinel MRSA<br>100% Polyester / Acrylic back coating<br>137cm / 54 inches<br>350gsm / 10.3 oz sqy +/- 5%  | Waterproof Upholstery >50,000 Martindale | BS 5852 Crib 5, IMO FTP Code 2010 Part 8   | Routine soap and warm water sponging is effective for ordinary soiling. Fresh stains, both water and oil based are easily removed using most water based household cleaning agents. Antiseptic cleaning agents can be used and more stubborn stains may be required a safe solvent such as Isopropyl Alcohol or mineral spirit. A half cup of household bleach for 5 litres of water can also be used as a useful disinfectant. Best cleaning is wipe & dry technique. Full immersion is not recommended. Not dry cleanable. Excellent stain removal has been observed for: Blood, Urine, Grass, Ink, Coffee, Grape Juice, Ketchup, Mustard, Ketchup, Mustard, Salad dressing and suntan lotion. |
| 6914         | Flame Retardant Endurance MRSA<br>100% Polyester impregnated and multi-coated microporous polymers<br>140cm / 55 inches<br>350gsm / 10.3 oz sqy +/- 5%                    | Waterproof Upholstery >50,000 Martindale | BS 5852 Crib 5, IMO FTP Code 2010 Part 8   | Do not dry clean<br>Will not support microbial growth including: Aspergillus Niger, E Coli, Attribata, Salmonella, Penicillium, MRSA, Cladosporium Herbarium. AATCC test 147 - 1998  |

Soapless detergent to be used on all of the above base cloths. No fabric conditioners/softeners or freshener sprays to be used as this can adversely affect FR properties. A tolerance of +/- 3% should be allowed for on pattern repeats as it can vary from quality to quality. Shade variations may occur batch to batch but we will endeavour to maintain good colour continuity. Please inspect all goods before cutting as no claims can be accepted or exchanges made once the material has been cut.

Samples and information

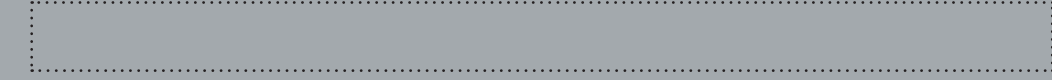
Get in touch with our team today for a fabric sample or for further information.

Ordering a sample is simple.

Online: [edmundbell.com](http://edmundbell.com)  
Call: +44 (0) 1706 717070  
Email: [sales@edmundbell.com](mailto:sales@edmundbell.com)

Although every effort is made, no guarantee for exact colour match is given.





Emerald



Floris Emerald



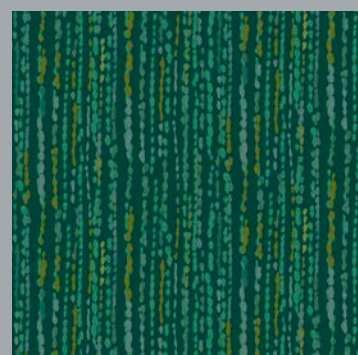
Oasis Emerald



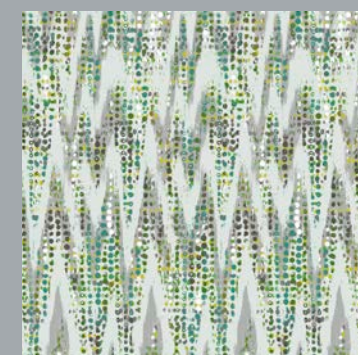
Marquise Zinc



Amilie Emerald



Monsoon Emerald



Finesse Emerald

Blush



Floris Blush



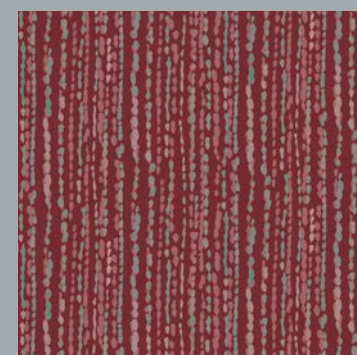
Oasis Blush



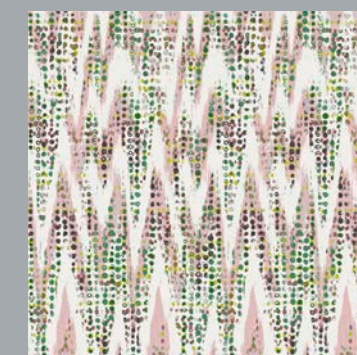
Marquise Green Tea



Amilie Blush

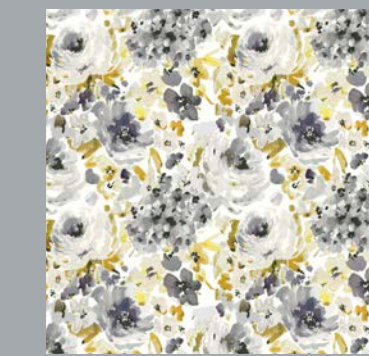


Monsoon Rouge



Finesse Blush

Ochre



Floris Ochre



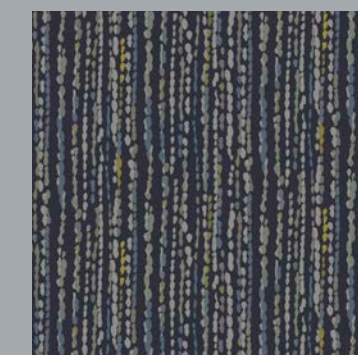
Oasis Ochre



Marquise Midnight



Amilie Ochre



Monsoon Midnight



Finesse Ochre

Large sample from top to bottom: Floris Emerald, Oasis Emerald, Marquise Zinc, Amilie Emerald, Monsoon Emerald, Finesse Emerald.

Printed onto 6910 Panama

Pattern repeats: Floris H35cm x V35cm. Oasis N/A. Marquise H7cm x V10.2cm. Amilie H35cm x V35cm. Monsoon H8.75cm x V8.75cm. Finesse H17.5cm x V34.5cm.